

RMH machine jack



Properties

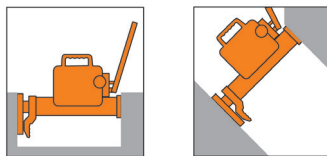
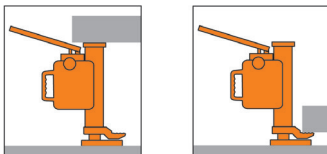
- Compact and stable construction.
- Usable in any position.
- Very low foot.
- The housing can be rotated through 360°.
- Accurate adjustment of the lowering speed is precisely adjustable.
- prevented from overload.
- Patented construction.
- The pump handle is detachable.

Application:

- Designed for repair, maintenance and mounting of heavy machines.

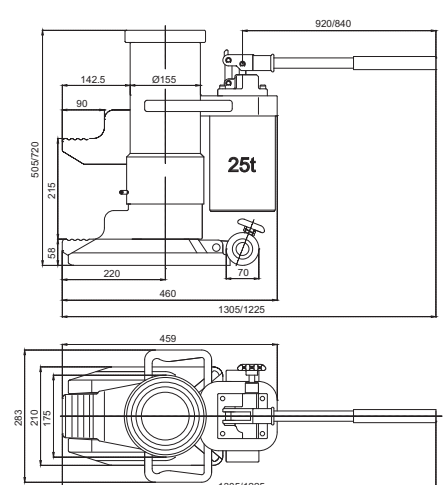
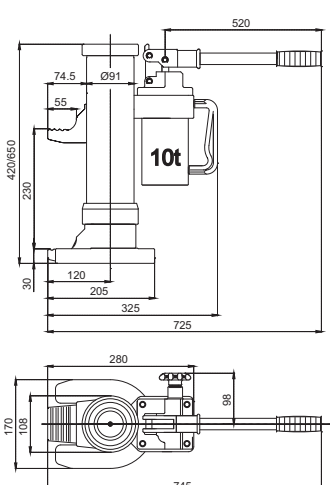
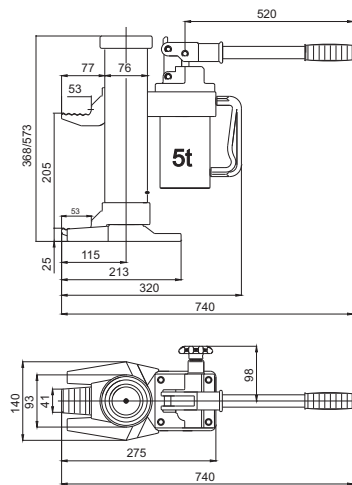
IMPORTANT:

- Never exceed the safe working load of the machine lifter.
- Never subject the claw to point loading, always fully load.
- Never add an additional load with a raised load.
- Do not use in unstable and uncertain positions.
- Use only with a flat surface that can carry the load.
- The load must be stable during lifting.
- Do not use machine lifters that are in bad condition or damaged.
- Ensure that the machine lifters are inspected and approved by a competent authority every year.
- It is not allowed to lift people with machine lifters.



Norm:

- EN12100-1/2, EN13157



Type	WLL (kg)	Maximum hand force (kg)	Weight (kg)	ProductId
RMH-50	5000	38	25	1800050
RMH-100	10000	40	35	1800100
RMH-250	25000	40	102	1800250